



## Northern Virginia Transportation Alliance

September 9, 2009

# WARD

WESTERN ALLIANCE FOR RAIL TO DULLES

## Phase II Rail to Dulles

[LETTER TO PROPERTY OWNERS](#)

[WHO IS WARD?](#)

[THE PETITION](#)

[FAQ](#)

[MAPS & RESOURCES](#)

[CONTACT WARD](#)

The Western Alliance for Rail to Dulles (WARD) is a non-profit organization of concerned property owners who are advocating the creation of a tax district to fund a portion of Fairfax County's share of the Phase II Rail to Dulles project (extending Metrorail from Wiehle Avenue to Dulles Airport and into Loudoun County). The WARD Board of Directors has successfully negotiated a petition with Fairfax County to create the Phase II Dulles Rail Transportation Improvement District. The petition includes an array of protections to insulate commercial landowners from unfair taxes should the Metrorail extension to Dulles Airport not occur as planned. We invite Phase II property owners to explore this website, which provides information, maps, background and details of the Phase II Rail to Dulles plan. **We need your signature by 9/18/09** on this important petition to ensure construction of the Rail to Dulles Phase II Metrorail stations in Reston and Herndon, which will enhance the economic vitality of the region.

Search  [Go](#)

[Quick Link to Signature Page](#)



## WARD Members:

A.J. Dvoskin

Beacon Properties

Boston Properties

Brandywine Realty Trust

Brookfield Properties

Carbon Thompson Development, LLC

Corporate Office Properties Trust

Crimson Partners

Greenfield Partners

Host Marriott, LP

Liberty Property Trust

Rappaport Companies

Rocks Engineering Company

Ruth & Hal Lauenders Charitable Trust

Stout and Teague

The JBG Companies

Thayer Properties

Tishman Speyer

Vornado / Charles E. Smith

VRI Realty

WRIT

---

---

# WARD Project Team:

Peter Johnston – Boston Properties

Mike Cooper – Brandywine Real Estate Investment Trust

Jeff Fairfield – Ruth & Hal Lauanders Charitable Trust

Legal Counsel: McGuireWoods LLP

Independent Consultant: Kathleen Turner Consulting

---

---

## **WARD Website Address:**

**[www.railtodulles.com](http://www.railtodulles.com)**

**Will provide links to:**

**Petition**

**Maps**

**History**

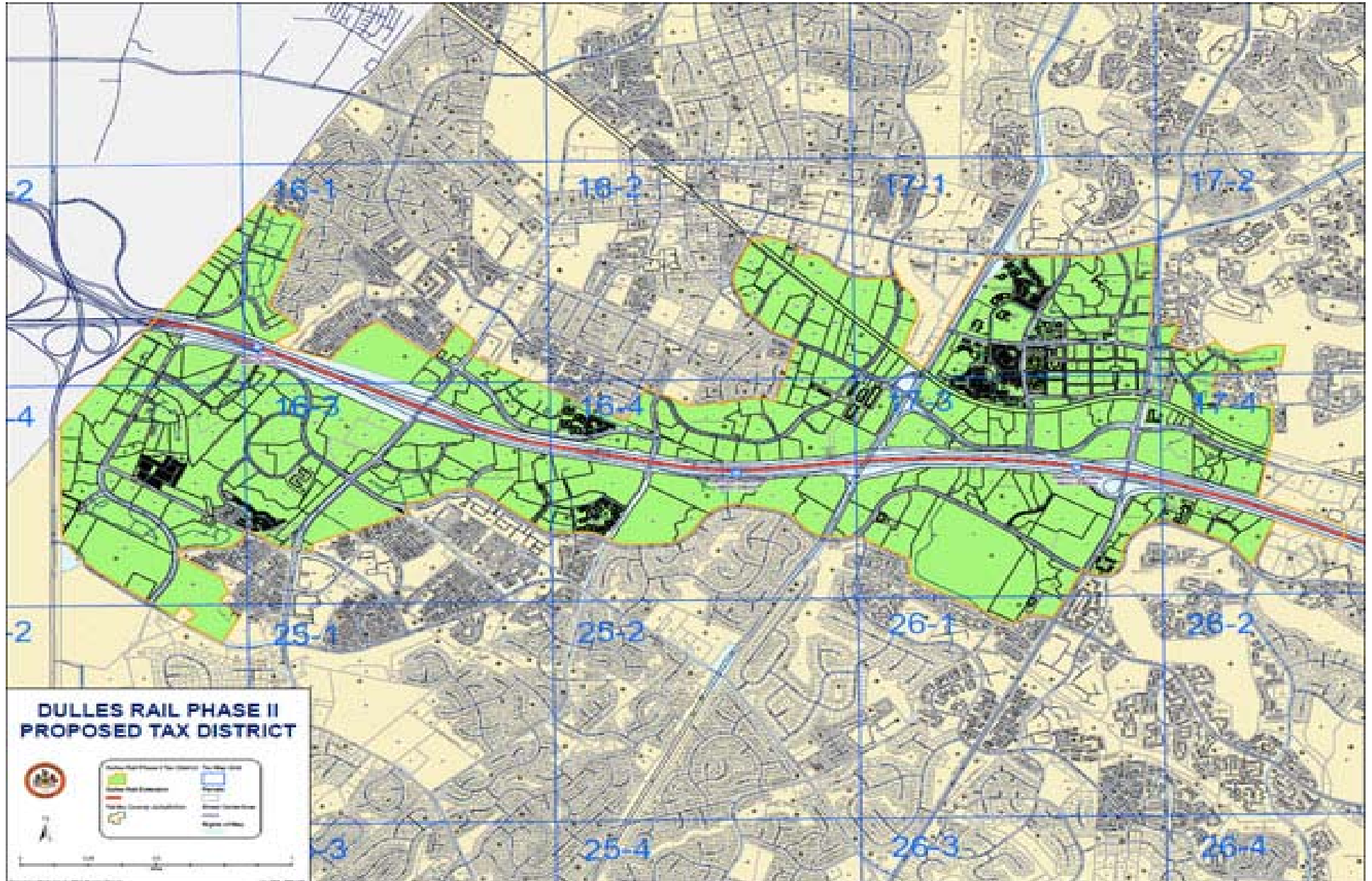
**Questions & Answers**

**WARD Contact Information**

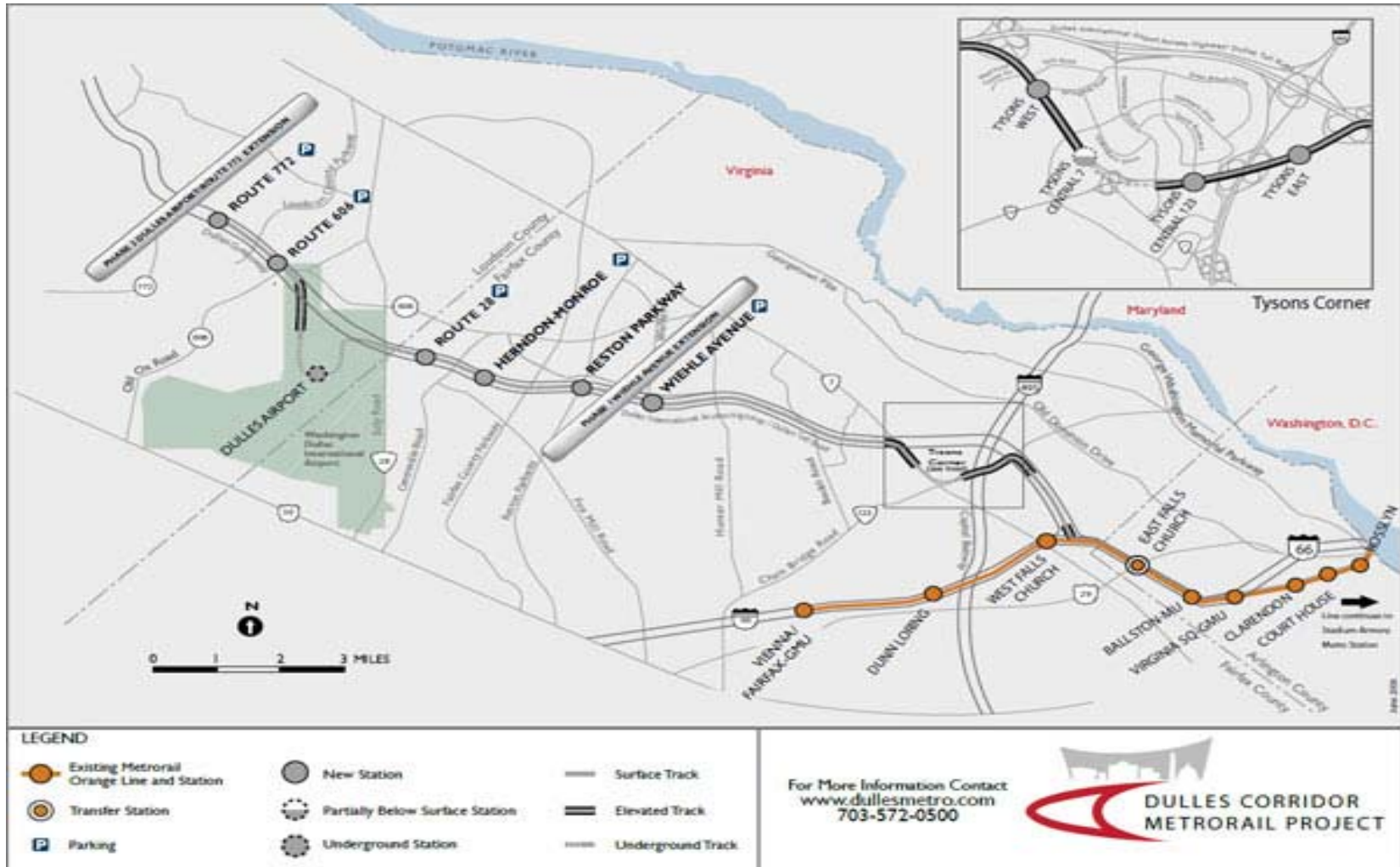
**Links to Dulles Corridor Metrorail Project**

---

# Tax District Boundaries:



# Proposed Silver Line:



**LEGEND**

Existing Metrorail Orange Line and Station	New Station	Surface Track
Transfer Station	Partially Below Surface Station	Elevated Track
Parking	Underground Station	Underground Track

For More Information Contact  
[www.dullesmetro.com](http://www.dullesmetro.com)  
 703-572-0500



# Metro Stations:

- Proposed Phase 2 Stations will mirror the Wiehle Avenue metro stop
- Phase 2 Tax District will pay for the stations at:
  - **Reston Parkway**
  - **Herndon**
  - **Route 28/CIT**

Proposed Wiehle Avenue Metro Stop

